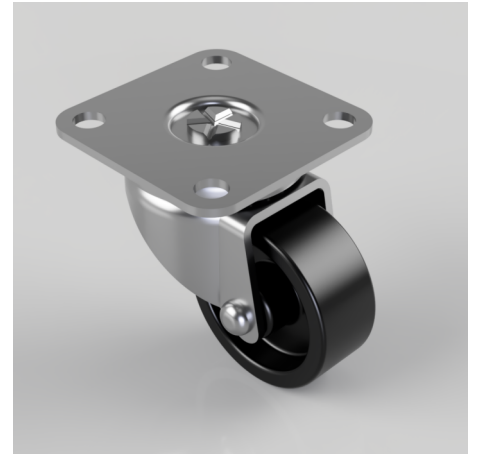


## Polypropylene Plate Swivel Castor 40mm 30kg Load

**Product code: BZD40PL**

Pressed steel swivel castor with a top plate fixing fitted with black polypropylene wheel with a plain bore. Wheel diameter 40mm, tread width 17mm, overall height 54mm, top plate 51mm x 51mm, hole centres 37mm x 37mm load capacity 30kg.



Diameter (mm)	40
Fixing Option	Plate
Castor Type	Swivel
Plate Size (mm)	51 x 51
Hole Centres (mm)	37 x 37
Height (mm)	54
Bearing Type	Plain
Swivel Radius (mm)	43
Wheel Material	Polypropylene
Colour / Shore Hardness	Black Polypropylene
Top Plate Thickness (mm)	1.5
Fork Thickness (mm)	1.5
Temperature Resistance	-15 °C TO +80 °C
To Suit Fixing Bolt (mm)	6
Tread (mm)	17
Load Capacity (kg)	30

## BIL GROUP LTD

Porte Marsh Road, Calne, Wiltshire, SN11 9BW

Registered in England No: 2603821

VAT Reg: GB572705729

