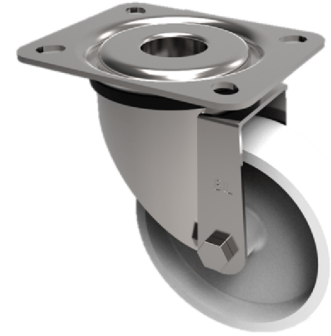


Polypropylene Plate Swivel Castor 100mm 160kg Load

Product code: SSMM100PLB/32



Grade 304 Pressed stainless steel swivel castor with top plate fixing fitted with a white polypropylene wheel with roller bearing. Wheel diameter 100mm, tread width 32mm, overall height 128mm, Plate size 105mm x 85mm, hole centres 80mm x 60mm. Load capacity 160kg.

Diameter (mm)	100
Fixing Option	Plate
Castor Type	Swivel
Height (mm)	128
Wheel Material	Polypropylene
Colour / Shore Hardness	White Polypropylene
Bearing Type	Roller
Tread (mm)	32
Fork Thickness (mm)	2
To Suit Fixing Bolt (mm)	8
Load Capacity (kg)	125
Temperature Resistance	-10 °C TO +60 °C
Plate Size (mm)	105 X 85
Hole Centres (mm)	80 X 60
Top Plate Thickness (mm)	2
Swivel Radius (mm)	84

BIL GROUP LTD

Porte Marsh Road, Calne, Wiltshire, SN11 9BW

Registered in England No: 2603821

VAT Reg: GB572705729

