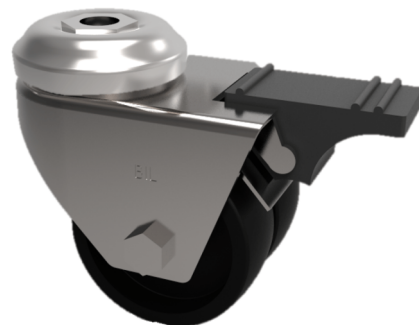


Polypropylene Bolt Hole Swivel Castor Brake 75mm 80kg Load

Product code: 2BZA75PLBH10SWB

Twin wheeled pressed steel swivel castor with a bolt hole fixing fitted with 2 black polypropylene wheels with plain bores and total lock brake. Wheel diameter 75mm, tread width 2 x 22mm, overall height 101mm, Load capacity 80kg.



| | |
|--------------------------|------------------------------|
| Diameter (mm) | 75 |
| Fixing Option | Bolt Hole |
| Castor Type | Swivel with Total Lock Brake |
| Head Dia (mm) | 55 |
| Height (mm) | 101 |
| Bearing Type | Plain |
| Swivel Radius (mm) | 97 |
| Wheel Material | Polypropylene |
| Colour / Shore Hardness | Black Polypropylene |
| Fork Thickness (mm) | 2.5 |
| Temperature Resistance | -15 °C TO +80 °C |
| To Suit Fixing Bolt (mm) | 10 |
| Tread (mm) | 2 x 22 |
| Load Capacity (kg) | 80 |

BIL GROUP LTD

Porte Marsh Road, Calne, Wiltshire, SN11 9BW

Registered in England No: 2603821

VAT Reg: GB572705729

