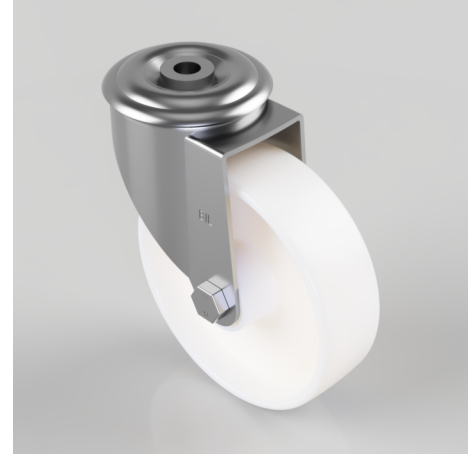


Polypropylene Bolt Hole Swivel Castor 125mm 180kg Load

Product code: BZMM125PLBBH12

Pressed steel swivel castor with a 12mm bolt hole fitted with a white polypropylene wheel with roller bearing bore, Wheel diameter 125mm, tread width 37mm, overall height 155mm, Load capacity 180kg.



Diameter (mm)	125
Castor Type	Swivel
Fixing Option	Bolt Hole
Height (mm)	155
Wheel Material	Polypropylene
Colour / Shore Hardness	White Polypropylene
Temperature Resistance	-20 °C TO +80 °C
Bearing Type	Roller
Load Capacity (kg)	180
Tread (mm)	37
Swivel Radius (mm)	104
Head Dia (mm)	76
Fork Thickness (mm)	2.5
To Suit Fixing Bolt (mm)	12

BIL GROUP LTD

Porte Marsh Road, Calne, Wiltshire, SN11 9BW

Registered in England No: 2603821

VAT Reg: GB572705729

