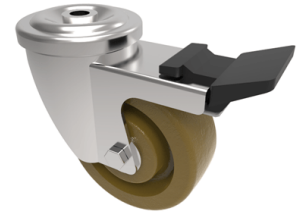


## Phenolic Bolt Hole Swivel Castor Brake 100mm 150kg Load

**Product code: BZMH100ANBH12SWBHT**



Pressed steel swivel castor with a 12mm bolt hole fitted with a phenolic wheel with a plain bore and a total lock brake. Wheel diameter 100mm, tread width 38mm, overall height 128mm, Load capacity 180kg with a maximum temperature of 250c..

Diameter (mm)	100
Fixing Option	Bolt Hole
Castor Type	Swivel with Total Lock Brake
Head Dia (mm)	78
To Suit Fixing Bolt (mm)	12
Height (mm)	128
Bearing Type	Plain
Swivel Radius (mm)	125
Wheel Material	Phenolic
Colour / Shore Hardness	Black High Temperature Phenolic
Temperature Resistance	-30 °C to +250 °C
Load Capacity (kg)	220
Tread (mm)	38
Fork Thickness (mm)	2.5

## BIL GROUP LTD

Porte Marsh Road, Calne, Wiltshire, SN11 9BW

Registered in England No: 2603821

VAT Reg: GB572705729

