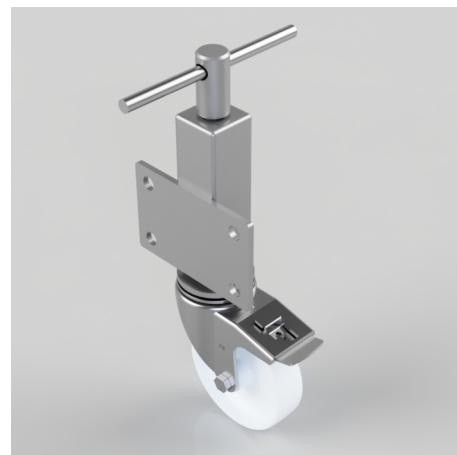


## Nylon Plate Swivel Castor Brake Locking Castor 125mm 250kg Load

**Product code: JAZ125NYSWB**

Zinc plated box jacking unit with side fitting plate and a 75mm lift fitted with a 125mm white zinc plated swivel pressed steel castor with a white nylon wheel with a plain bore and total lock brake, with a load capacity of 250kg Please note Jacking castors are rated on a different principal to other castors and we recommend the total lifted load is divided over just 2 jacking units. 1 extra safety point is when jacked up please beware of any obstacles as a sudden shock could result in the inner square tube bending around the outer tube. Please refer to the BIL catalogue or request a drawing



Diameter (mm)	125
Castor Height (mm)	157
Castor Type	Swivel with Total Lock Brake
Swivel Radius (mm)	125
Fixing Option	Plate
Bearing Type	Plain
To Suit Fixing Bolt (mm)	14
Wheel Material	Nylon
Colour / Shore Hardness	White Nylon
Temperature Resistance	-30 °C TO +80 °C
Load Capacity (kg)	250
Tread (mm)	35
Height (mm)	395 / 470
Lifting Stroke (mm)	75

## BIL GROUP LTD

Porte Marsh Road, Calne, Wiltshire, SN11 9BW

Registered in England No: 2603821

VAT Reg: GB572705729

