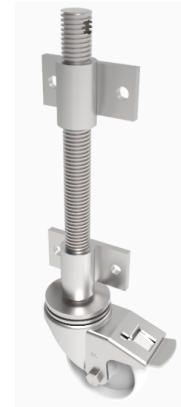


## Nylon Plate Swivel Castor Brake Locking Castor 100mm 200kg Load

**Product code: JAB125NYBJSWB**

Open screw thread jacking castor with side fitting nuts with 160mm lift fitted with a 125mm white zinc plated swivel pressed steel castor with a white nylon wheel with a ball bearing and total lock brake, with a load capacity of 200kg. Please note Jacking castors are rated on a different principal to other castors and we recommend the total lifted load is divided over just 2 jacking units. 1 extra safety point is when jacked up please beware of any obstacles as a sudden shock could result in bending the thread but more likely the castor will tear away from the screw thread. Please refer to the BIL catalogue or request a drawing



Diameter (mm)	125
Castor Height (mm)	156
Castor Type	Swivel with Total Lock Brake
Swivel Radius (mm)	125
Fixing Option	Plate
Bearing Type	Ball
To Suit Fixing Bolt (mm)	12
Wheel Material	Nylon
Colour / Shore Hardness	White Nylon
Temperature Resistance	-30 °C TO +80 °C
Load Capacity (kg)	200
Tread (mm)	35
Height (mm)	466
Lifting Stroke (mm)	160

## BIL GROUP LTD

Porte Marsh Road, Calne, Wiltshire, SN11 9BW

Registered in England No: 2603821

VAT Reg: GB572705729

