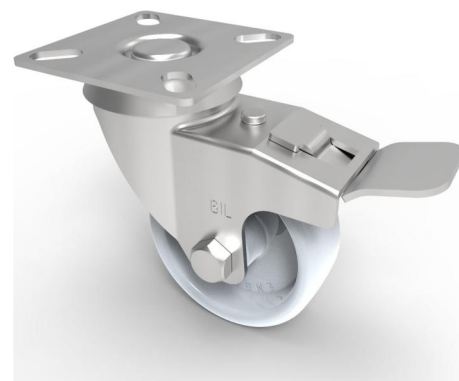


Nylon Plate Swivel Castor Brake 50mm 50kg Load

Product code: BZD50NYSWB

Pressed steel swivel castor with a top plate fixing fitted with a white nylon wheel with a plain bore and swivel wheel brake. Wheel diameter 50mm, tread width 17mm, overall height 68mm, plate size 50mm x 50mm, hole centres 39mm x 39mm or 31mm x 31mm. Load capacity 50kg.



Diameter (mm)	50
Fixing Option	Plate
Castor Type	Swivel with Total Lock Brake
Plate Size (mm)	50 x 50
Hole Centres (mm)	39 / 31 x 39 / 31
Height (mm)	70
Bearing Type	Plain
Swivel Radius (mm)	73
Wheel Material	Nylon
Colour / Shore Hardness	White Nylon
Top Plate Thickness (mm)	1.5
Fork Thickness (mm)	1.5
Temperature Resistance	-15 °C TO +80 °C
To Suit Fixing Bolt (mm)	6
Tread (mm)	17
Load Capacity (kg)	40

BIL GROUP LTD

Porte Marsh Road, Calne, Wiltshire, SN11 9BW

Registered in England No: 2603821

VAT Reg: GB572705729

