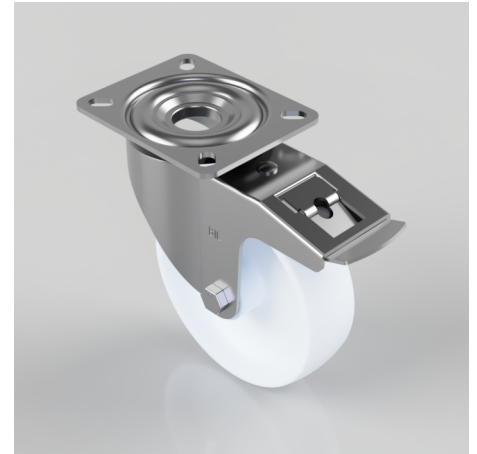


Nylon Plate Swivel Castor Brake 160mm 350kg Load

Product code: BZMM160NYBSWB

Pressed steel swivel Swivel Castor Brake castor with a top plate fixing fitted with a white nylon wheel with a roller bearing and total lock brake. Wheel diameter 160mm, tread width 45mm overall height 195mm, top plate 135mm x 110mm, hole centres 105mm x 80mm. Load capacity 350kg.



Diameter (mm)	160
Castor Type	Swivel with Total Lock Brake
Fixing Option	Plate
Height (mm)	195
Wheel Material	Nylon
Colour / Shore Hardness	White Nylon
Temperature Resistance	-30 °C TO +80 °C
Bearing Type	Roller
Load Capacity (kg)	350
Tread (mm)	45
Swivel Radius (mm)	167
Plate Size (mm)	135 x 110
Hole Centres (mm)	105 x 80
Top Plate Thickness (mm)	4
Fork Thickness (mm)	3
To Suit Fixing Bolt (mm)	10

BIL GROUP LTD

Porte Marsh Road, Calne, Wiltshire, SN11 9BW

Registered in England No: 2603821

VAT Reg: GB572705729

