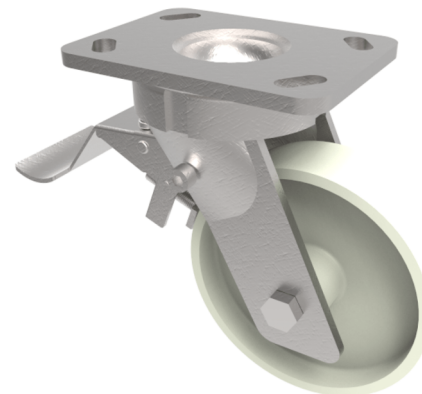


## Nylon Plate Swivel Castor Brake 150mm 750kg Load

**Product code: BZK150NYBSWB**

Fabricated swivel castor with a top plate fixing fitted with a white nylon wheel with roller bearings and total lock brake. Wheel diameter 150mm, tread width 45mm, overall height 200mm, top plate 150mm x 110mm, hole centres 105mm x 80mm or 121mm x 59mm. Load capacity 750kg.



Diameter (mm)	150
Fixing Option	Plate
Castor Type	Swivel with Total Lock Brake
Bearing Type	Roller
Height (mm)	200
Plate Size (mm)	150 x 110
Hole Centres (mm)	105/121 x 80/59
To Suit Fixing Bolt (mm)	12
Wheel Material	Nylon
Colour / Shore Hardness	White Nylon
Temperature Resistance	-30 °C TO +80 °C
Top Plate Thickness (mm)	7.5
Fork Thickness (mm)	6
Swivel Radius (mm)	140
Load Capacity (kg)	750
Tread (mm)	45

## BIL GROUP LTD

Porte Marsh Road, Calne, Wiltshire, SN11 9BW

Registered in England No: 2603821

VAT Reg: GB572705729

