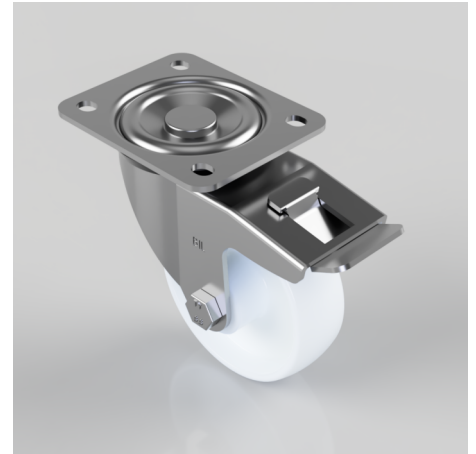


Nylon Plate Swivel Castor Brake 100mm 270kg Load

Product code: BZE100NYBSWB

Pressed steel swivel castor with a top plate fixing fitted with a white nylon wheel with roller bearings thread guards and total lock brake. Wheel diameter 100mm, tread width 32mm, overall height 128mm, top plate 105mm x 86mm, hole centres 80mm x 60mm. Load capacity 270kg



Diameter (mm)	100
Castor Type	Swivel with Total Lock Brake
Fixing Option	Plate
Height (mm)	128
Wheel Material	Nylon
Colour / Shore Hardness	White Nylon
Temperature Resistance	-30 °C TO +80 °C
Bearing Type	Roller
Load Capacity (kg)	270
Tread (mm)	32
Swivel Radius (mm)	115
Plate Size (mm)	105 x 86
Hole Centres (mm)	80 X 60
Top Plate Thickness (mm)	3
Fork Thickness (mm)	3
To Suit Fixing Bolt (mm)	8

BIL GROUP LTD

Porte Marsh Road, Calne, Wiltshire, SN11 9BW

Registered in England No: 2603821

VAT Reg: GB572705729

