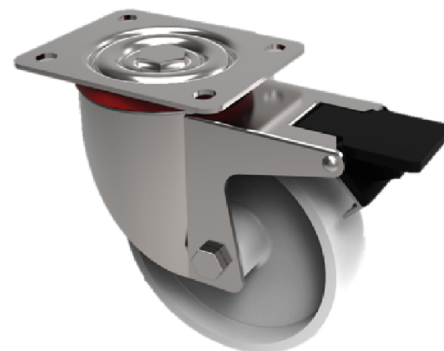


Nylon Plate Swivel Castor Brake 100mm 210kg Load

Product code: SSXM100NYSWBHT

Stainless steel grade 304 swivel castor with a top plate fixing fitted with a off white nylon wheel with a Plain Bore and a total lock brake. Wheel diameter 100mm, tread width 35mm, overall height 130mm, top plate 100mm x 85mm, hole centres 80mm x 60mm or 75mm x 45mm. Load capacity 220kg at a maximum 130c.



Diameter (mm)	100
Fixing Option	Plate
Castor Type	Swivel with Total Lock Brake
Plate Size (mm)	100 x 85
Hole Centres (mm)	80/75 x 60/45
To Suit Fixing Bolt (mm)	8
Height (mm)	128
Bearing Type	Plain
Swivel Radius (mm)	125
Wheel Material	Nylon
Colour / Shore Hardness	White High Temperature Nylon
Temperature Resistance	-30 °C to +130 °C
Load Capacity (kg)	200
Tread (mm)	35
Top Plate Thickness (mm)	2.5
Fork Thickness (mm)	2.5

BIL GROUP LTD

Porte Marsh Road, Calne, Wiltshire, SN11 9BW

Registered in England No: 2603821

VAT Reg: GB572705729

