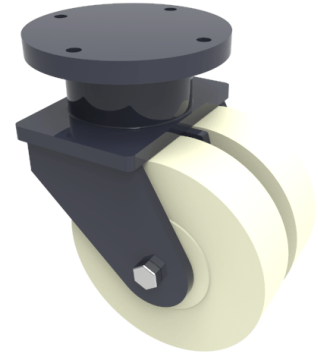


Nylon Plate Swivel Castor 400mm 11500kg Load

Product code: 2BZSZ400NYBJ

POA Heavy duty fabricated twin wheel swivel castor fitted with 2 x cast machined nylon wheels with ball bearings, Wheel diameter 400mm, Tread width 110mm x 2, Overall height 570mm, Top plate 365mm diameter, Hole centres 4 holes at 300mm pcd, Load capacity 12000kg ****MANUFACTURED TO ORDER****



| | |
|--------------------------|------------------------|
| Diameter (mm) | 400 |
| Fixing Option | Plate |
| Castor Type | Swivel |
| Bearing Type | Ball |
| Plate Size (mm) | 365 |
| Hole Centres (mm) | 365 |
| Height (mm) | 570 |
| Swivel Radius (mm) | 369 |
| To Suit Fixing Bolt (mm) | 24 |
| Wheel Material | Nylon |
| Colour / Shore Hardness | White Nylon |
| Temperature Resistance | "-30 °C TO +80 °C |
| Tread (mm) | 2 x 110 |
| Load Capacity (kg) | 11500 |

BIL GROUP LTD

Porte Marsh Road, Calne, Wiltshire, SN11 9BW

Registered in England No: 2603821

VAT Reg: GB572705729

