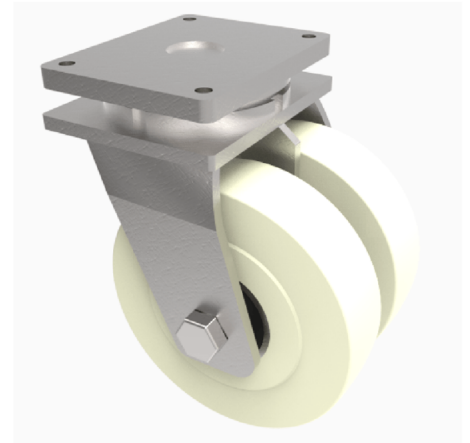


## Nylon Plate Swivel Castor 250mm 2400kg Load

**Product code: 2BZQ250NYBJ**

Twin wheeled swivel castor with a top plate fixing fitted with 2 white nylon wheels with ball journal bearings. Wheel diameter 2 x 250mm, tread width 2 x 50mm, overall height 314mm, top plate 175mm x 140mm, hole centres 140mm x 105mm. Load capacity 2400kg.



Diameter (mm)	250
Fixing Option	Plate
Castor Type	Swivel
Bearing Type	Ball
Plate Size (mm)	175 X 140
Hole Centres (mm)	140 X 105
Height (mm)	314
Swivel Radius (mm)	215
To Suit Fixing Bolt (mm)	14
Wheel Material	Nylon
Colour / Shore Hardness	White Nylon
Temperature Resistance	&quot;-30 °C TO +80 °C
Tread (mm)	2 x 60
Load Capacity (kg)	2600
Top Plate Thickness (mm)	12
Fork Thickness (mm)	8

### BIL GROUP LTD

Porte Marsh Road, Calne, Wiltshire, SN11 9BW

Registered in England No: 2603821

VAT Reg: GB572705729

