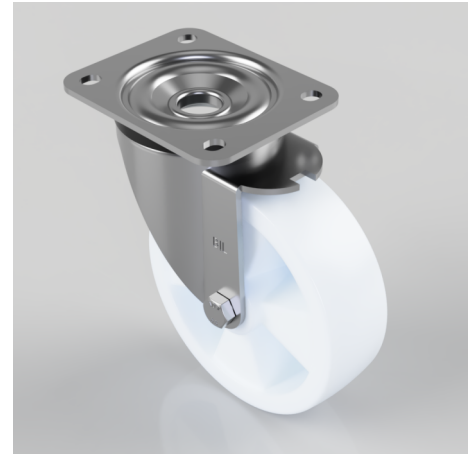


## Nylon Plate Swivel Castor 160mm 500kg Load

**Product code: BZPH160NY**

Pressed steel swivel castor with a top plate fixing fitted with a white nylon wheel with a plain bore. Wheel diameter 160mm, tread width 50mm, overall height 195mm, top plate 135mm x 110mm, hole centres 105mm x 80/75mm. Load capacity 500kg.



Diameter (mm)	160
Castor Type	Swivel
Fixing Option	Plate
Height (mm)	195
Wheel Material	Nylon
Colour / Shore Hardness	White Nylon
Temperature Resistance	-30 °C TO +80 °C
Bearing Type	Plain
Load Capacity (kg)	500
Tread (mm)	50
Swivel Radius (mm)	133
Plate Size (mm)	135 x 110
Hole Centres (mm)	105 x 80/75
Top Plate Thickness (mm)	4
Fork Thickness (mm)	4
To Suit Fixing Bolt (mm)	10

## BIL GROUP LTD

Porte Marsh Road, Calne, Wiltshire, SN11 9BW

Registered in England No: 2603821

VAT Reg: GB572705729

