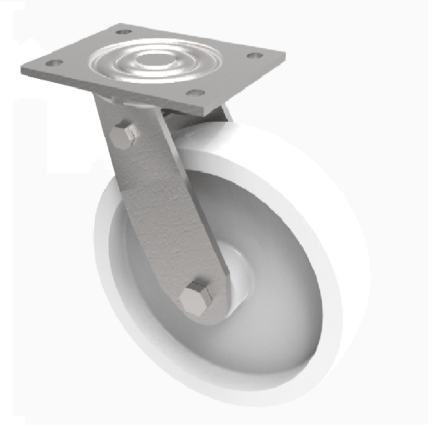


Nylon Plate Swivel Castor 150mm 800kg Load

Product code: BZKL150NY

Fabricated swivel castor with a top plate fixing fitted with a white nylon wheel with plain bearing. Wheel diameter 150mm, tread width 45mm, overall height 195mm, top plate 138mm x 110mm, hole centres 105mm x 80mm/75mm. Load capacity 800kg.



Diameter (mm)	150
Fixing Option	Plate
Castor Type	Swivel
Bearing Type	Plain
Height (mm)	195
Plate Size (mm)	138 x 110
Hole Centres (mm)	105 x 80
To Suit Fixing Bolt (mm)	10
Wheel Material	Nylon
Colour / Shore Hardness	White Nylon
Temperature Resistance	-30 °C TO +80 °C
Top Plate Thickness (mm)	7.5
Fork Thickness (mm)	6
Swivel Radius (mm)	115
Load Capacity (kg)	800
Tread (mm)	45