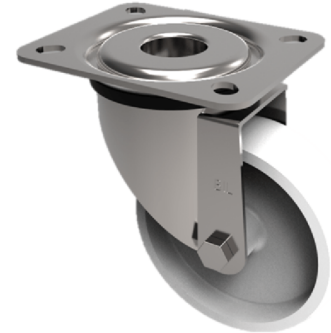


## Nylon Plate Swivel Castor 150mm 350kg Load

**Product code: BZWB150NYB**



Pressed steel swivel castor with a top plate fixing fitted with a white nylon wheel with a roller bearing. Wheel diameter 150mm, tread width 40mm, overall height 190mm, top plate 135mm x 110mm, hole centres 105mm x 80/75mm. Load capacity 350kg.

Diameter (mm)	150
Castor Type	Swivel
Fixing Option	Plate
Height (mm)	190
Wheel Material	Nylon
Colour / Shore Hardness	White Nylon
Temperature Resistance	-30 °C TO +80 °C
Bearing Type	Roller
Load Capacity (kg)	350
Tread (mm)	40
Swivel Radius (mm)	127
Plate Size (mm)	135 x 110
Hole Centres (mm)	105 x 80
Top Plate Thickness (mm)	4
Fork Thickness (mm)	3
To Suit Fixing Bolt (mm)	10

### BIL GROUP LTD

Porte Marsh Road, Calne, Wiltshire, SN11 9BW

Registered in England No: 2603821

VAT Reg: GB572705729

