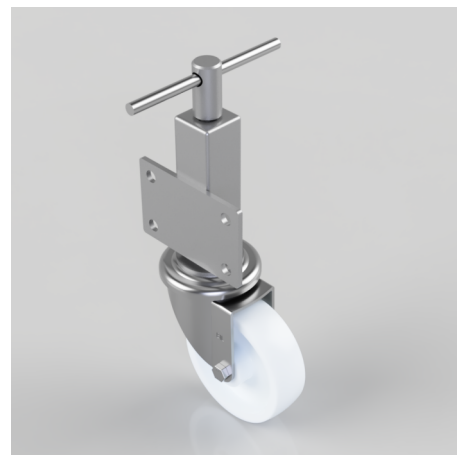


## Nylon Plate Swivel Castor 150mm 250kg Load

**Product code: JAZ150NY**

Zinc plated box jacking unit with side fitting plate and a 75mm lift fitted with a 150mm white zinc plated swivel pressed steel castor with a white nylon wheel with plain bore with a load capacity of 250kg Please note Jacking castors are rated on a different principal to other castors and we recommend the total lifted load is divided over just 2 jacking units. 1 extra safety point is when jacked up please beware of any obstacles as a sudden shock could result in the inner square tube bending around the outer tube. Please refer to the BIL catalogue or request a drawing



Diameter (mm)	150
Castor Height (mm)	188
Castor Type	Swivel
Swivel Radius (mm)	128
Fixing Option	Plate
To Suit Fixing Bolt (mm)	14
Wheel Material	Nylon
Colour / Shore Hardness	White Nylon
Temperature Resistance	-30 °C TO +80 °C
Load Capacity (kg)	250
Tread (mm)	45
Height (mm)	426 / 501
Lifting Stroke (mm)	75
Bearing Type	Plain

## BIL GROUP LTD

Porte Marsh Road, Calne, Wiltshire, SN11 9BW

Registered in England No: 2603821

VAT Reg: GB572705729

