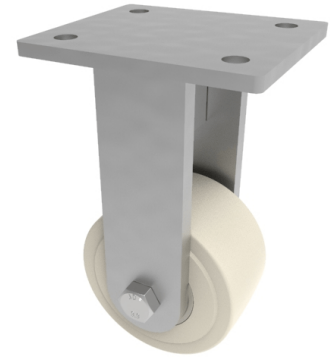


Nylon Plate Fixed Castor 250mm 4500kg Load

Product code: BZUF250NYBJ/80/368

Fabricated fixed castor with a flat plate fixing fitted with a nylon wheel with ball bearings. Wheel diameter 250mm, tread width 80mm, overall height 368mm, plate size 178mm x 153mm, hole centres 127mm x 102mm. Load capacity 4500kg.

****MANUFACTURED TO ORDER****



Diameter (mm)	250
Fixing Option	Plate
Castor Type	Fixed
Bearing Type	Ball
Height (mm)	368
Plate Size (mm)	178 X 153
Hole Centres (mm)	127 x 102
To Suit Fixing Bolt (mm)	16
Wheel Material	Cast Nylon
Colour / Shore Hardness	White Cast Nylon / 60 - 90 Shore D
Temperature Resistance	-30 °C TO +80 °C
Load Capacity (kg)	4500
Tread (mm)	80

BIL GROUP LTD

Porte Marsh Road, Calne, Wiltshire, SN11 9BW

Registered in England No: 2603821

VAT Reg: GB572705729

