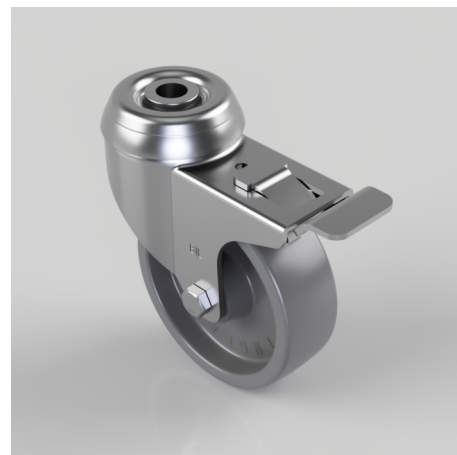


Nylon Bolt Hole Swivel Castor Brake 75mm 70kg Load

Product code: BZD75GNYBH10SWB

Pressed steel swivel castor with a 10mm bolt hole fixing fitted with a grey nylon wheel with a Plain Bore and total lock brake. Wheel diameter 75mm, tread width 25mm, overall height 99mm. Load capacity 70kg.



Diameter (mm)	75
Fixing Option	Bolt Hole
Castor Type	Swivel with Total Lock Brake
Head Dia (mm)	48
Height (mm)	99
Bearing Type	Plain
Swivel Radius (mm)	84
Wheel Material	Nylon
Colour / Shore Hardness	Grey Nylon
Fork Thickness (mm)	2
Temperature Resistance	-15 °C TO +80 °C
To Suit Fixing Bolt (mm)	10
Tread (mm)	25
Load Capacity (kg)	70

BIL GROUP LTD

Porte Marsh Road, Calne, Wiltshire, SN11 9BW

Registered in England No: 2603821

VAT Reg: GB572705729

