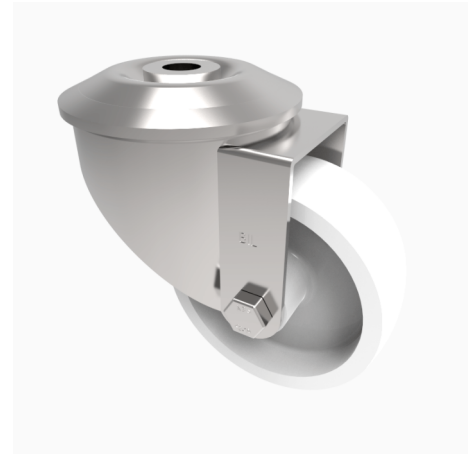


## Nylon Bolt Hole Swivel Castor 80mm 150kg Load

**Product code: SSMM80NYBH12**

Grade 304 Pressed stainless steel swivel castor with a 12mm bolt hole fixing fitted with a white nylon wheel with plain bore. Wheel diameter 80mm tread width 30mm, overall height 105mm. Load capacity 150kg.



Diameter (mm)	80
Fixing Option	Bolt Hole
Castor Type	Swivel
Height (mm)	105
Wheel Material	Nylon
Colour / Shore Hardness	White Nylon
Bearing Type	Plain
Tread (mm)	32
Fork Thickness (mm)	2
To Suit Fixing Bolt (mm)	12
Load Capacity (kg)	150
Temperature Resistance	-30 °C TO +80 °C
Head Dia (mm)	76
Swivel Radius (mm)	74