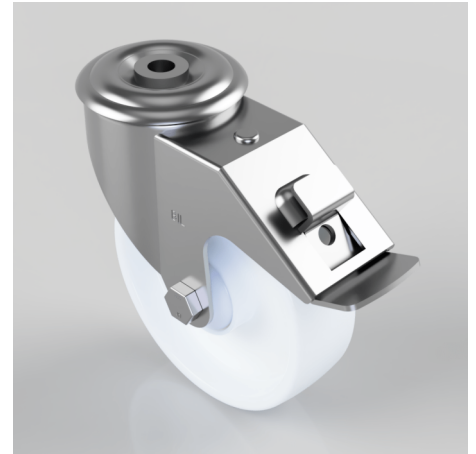


Nylon Bolt Hole Swivel Castor 125mm 200kg Load

Product code: BZMM125NYBJBH12SWB

Pressed steel swivel castor with a 12mm bolt hole fitted with a white nylon wheel with single ball bearing and hub caps and a total lock brake. Wheel diameter 125mm, tread width 37mm, overall height 155mm, Load capacity 200kg.



| | |
|--------------------------|------------------------------|
| Diameter (mm) | 125 |
| Castor Type | Swivel with Total Lock Brake |
| Fixing Option | Bolt Hole |
| Height (mm) | 155 |
| Wheel Material | Nylon |
| Colour / Shore Hardness | White Nylon |
| Temperature Resistance | -30 °C TO +80 °C |
| Bearing Type | Ball |
| Load Capacity (kg) | 200 |
| Tread (mm) | 37 |
| Swivel Radius (mm) | 134 |
| Head Dia (mm) | 76 |
| Fork Thickness (mm) | 2 |
| To Suit Fixing Bolt (mm) | 12 |

BIL GROUP LTD

Porte Marsh Road, Calne, Wiltshire, SN11 9BW

Registered in England No: 2603821

VAT Reg: GB572705729

