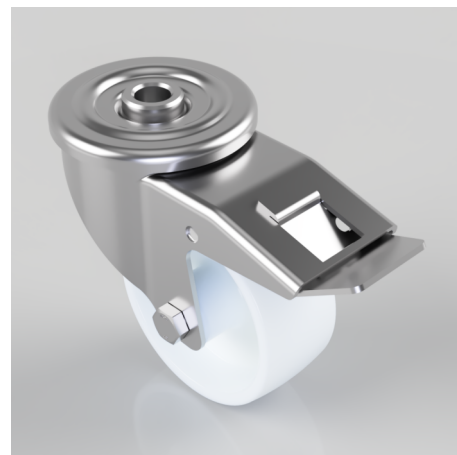


Nylon Bolt Hole Stainless Steel Swivel Castor Brake 80mm 150kg Load

Product code: V82Q080NYPB12

Stainless steel swivel castor with a 12mm bolt hole fixing fitted with white nylon wheel with plain bore and total lock brake. Wheel diameter 80mm, tread width 35mm, overall height 108mm. Load capacity 150kg.



Diameter (mm)	80
Castor Type	Swivel with Total Lock Brake
Fixing Option	Bolt Hole
Height (mm)	108
Wheel Material	Nylon
Colour / Shore Hardness	White Nylon
Temperature Resistance	-5°C to 60°C
Bearing Type	Plain
Load Capacity (kg)	150
Tread width (mm)	35
Swivel Radius (mm)	110
Head Dia (mm)	74
To Suit Fixing Bolt (mm)	12
Fork Thickness (mm)	2
Brand	Varley

BIL GROUP LTD

Porte Marsh Road, Calne, Wiltshire, SN11 9BW

Registered in England No: 2603821

VAT Reg: GB572705729

