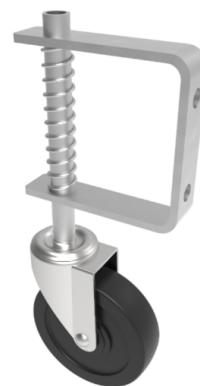


Low Cost Gate Castor 100mm 60kg Load

Product code: BZPGC100HRP

Despite the low cost, this heavy duty gate castor (with its hard rubber wheel) has been designed to support the weight of wide metal and wooden gates as well as garage doors weighing up to 60kg.



- Heavy-duty & durable: 60kg load capacity per castor
- Ideal for use on uneven surfaces: The castor is mounted on a spring that allows the height of the wheel to adjust automatically as it rolls over uneven ground, keeping the gate at an even height
- 360 Swivel: With a 360-degree swivel design, for use on left or right-handed gates. Allows the castor to move and rotate to any direction and over unsteady terrain
- Easy to install: Pre-drilled with 2 fixing holes so you can affix it quickly and easily to your gate/door

Diameter (mm)	100
Tread (mm)	27
Castor Type	Swivel
Load Capacity (kg)	60
Bearing Type	Plain
Fixing Option	Plate
Wheel Material	Rubber on Nylon
Colour / Shore Hardness	Black Rubber on Nylon Rim / 85 Shore A
Height (mm)	276
Swivel Radius (mm)	75
To Suit Fixing Bolt (mm)	10
Temperature Resistance	-30 °C TO +80 °C

BIL GROUP LTD

Porte Marsh Road, Calne, Wiltshire, SN11 9BW

Registered in England No: 2603821

VAT Reg: GB572705729

