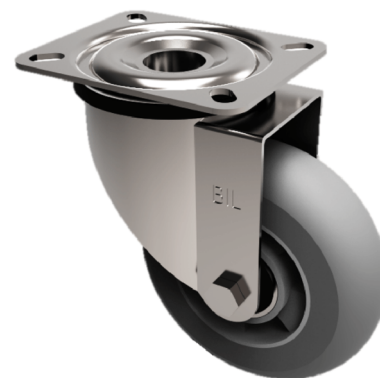


Grey Soft Elastic Rubber Plate Swivel Castor 250mm 450kg Load

Product code: BZP250SRERGBJ

Pressed steel swivel castor with a flat plate fixing fitted with a grey ergonomic high elastic natural 55 shore A round profile rubber tyre on aluminium centred wheel with a ball bearing. Wheel diameter 250mm, tread width 50mm, overall height 300mm, plate size 135mm x 110mm, hole centres 105mm x 80mm. Load capacity 450kg. REACH compliant also PAH-Free rubber to confirm to EU-directive 2005/69/EC, also available with flat tread details on request



| | |
|--------------------------|---|
| Diameter (mm) | 250 |
| Castor Type | Swivel |
| Fixing Option | Plate |
| Height (mm) | 292 |
| Wheel Material | Rubber on Aluminium |
| Colour / Shore Hardness | Grey Ergonomic Rubber on Aluminium Rim / 55 Shore A |
| Temperature Resistance | -30 °C TO +80 °C |
| Bearing Type | Ball |
| Load Capacity (kg) | 450 |
| Tread (mm) | 50 |
| Swivel Radius (mm) | 180 |
| Plate Size (mm) | 135 x 110 |
| Hole Centres (mm) | 105 x 80 |
| Top Plate Thickness (mm) | 6 |
| Fork Thickness (mm) | 4 |
| To Suit Fixing Bolt (mm) | 12 |

BIL GROUP LTD

Porte Marsh Road, Calne, Wiltshire, SN11 9BW

Registered in England No: 2603821

VAT Reg: GB572705729

