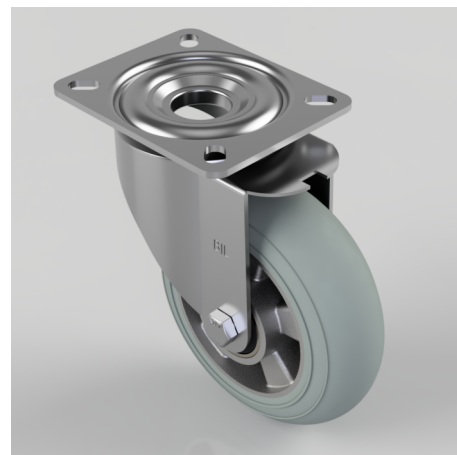


Grey Soft Elastic Rubber Plate Swivel Castor 160mm 300kg Load

Product code: BZMM160SRERGBJ

Pressed steel swivel castor with a top plate fixing fitted with an ergonomic grey high elastic natural 55 shore A round profile rubber tyre aluminium centred wheel with a ball journal bearings. Wheel diameter 160mm, tread width 50mm, overall height 195mm, top plate 135mm x 110mm, hole centres 105mm x 80mm. Load capacity 300kg. REACH compliant also PAH-Free rubber to confirm to EU-directive 2005/69/EC, also available with flat tread details on request



Diameter (mm)	160
Castor Type	Swivel
Fixing Option	Plate
Height (mm)	195
Wheel Material	Rubber on Aluminium
Colour / Shore Hardness	Grey Ergonomic Rubber on Aluminium Rim / 55 Shore A
Temperature Resistance	-30 °C TO +80 °C
Bearing Type	Ball
Load Capacity (kg)	300
Tread (mm)	50
Swivel Radius (mm)	140
Plate Size (mm)	135 x 110
Hole Centres (mm)	105 x 80/75
Top Plate Thickness (mm)	3
Fork Thickness (mm)	3
To Suit Fixing Bolt (mm)	10

BIL GROUP LTD

Porte Marsh Road, Calne, Wiltshire, SN11 9BW

Registered in England No: 2603821

VAT Reg: GB572705729

