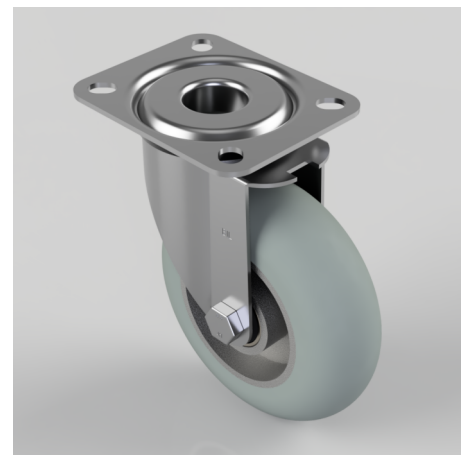


## Grey Soft Elastic Rubber Plate Swivel Castor 125mm 200kg Load

**Product code: BZMM125SRERGBJ**

Pressed steel swivel castor with a top plate fixing with a grey ergonomic grey high elastic natural 55 shore A round profile rubber tyre wheel with an aluminium centre with ball bearings. Wheel diameter 125mm, tread width 40mm, overall height 155mm, top plate 105mm x 85mm, hole centres 80mm x 60mm. Load capacity 200kg. REACH compliant also PAH-Free rubber to confirm to EU-directive 2005/69/EC, also available with flat tread details on request



|                          |   |
|--------------------------|---|
| Diameter (mm)            | 125   |
| Castor Type              | Swivel  |
| Fixing Option            | Plate   |
| Height (mm)              | 155   |
| Wheel Material           | Rubber on Aluminium                                 |
| Colour / Shore Hardness  | Grey Ergonomic Rubber on Aluminium Rim / 55 Shore A |
| Temperature Resistance   | -30 °C TO +80 °C                                    |
| Bearing Type             | Ball  |
| Load Capacity (kg)       | 200   |
| Tread (mm)               | 40  |
| Swivel Radius (mm)       | 95  |
| Plate Size (mm)          | 105 X 85  |
| Hole Centres (mm)        | 80 X 60   |
| Top Plate Thickness (mm) | 2.5   |
| Fork Thickness (mm)      | 2   |
| To Suit Fixing Bolt (mm) | 8   |

## BIL GROUP LTD

Porte Marsh Road, Calne, Wiltshire, SN11 9BW

Registered in England No: 2603821

VAT Reg: GB572705729

