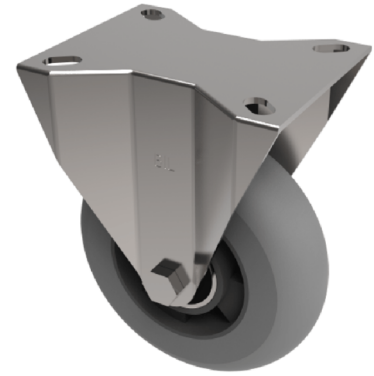


## Grey Soft Elastic Rubber Plate Fixed Castor 150mm 300kg Load

**Product code: BZPHF150SRERGBJ**



Pressed steel fixed castor with a flat plate fixing fitted with a grey ergonomic high elastic natural 55 shore A round profile rubber tyre on aluminium centred wheel with ball bearings. Wheel diameter 150mm, tread width 50mm, overall height 188mm, plate size 135mm x 110mm, hole centres 105mm x 80mm. Load capacity 300kg. .REACH compliant also PAH-Free rubber to confirm to EU-directive 2005/69/EC, also available with flat tread details on request

Diameter (mm)	150
Castor Type	Fixed
Fixing Option	Plate
Height (mm)	190
Wheel Material	Rubber on Aluminium
Colour / Shore Hardness	Grey Ergonomic Rubber on Aluminium Rim / 55 Shore A
Temperature Resistance	-30 °C TO +80 °C
Bearing Type	Ball
Load Capacity (kg)	300
Tread (mm)	50
Plate Size (mm)	135 x 115
Hole Centres (mm)	105 x 80/75
Top Plate Thickness (mm)	5
Fork Thickness (mm)	5
To Suit Fixing Bolt (mm)	10