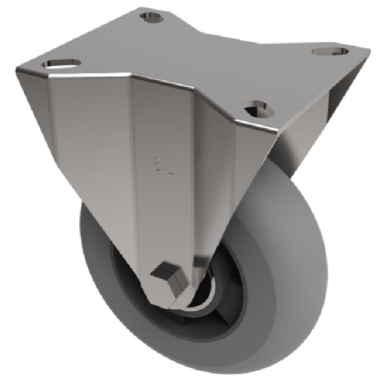


Grey Soft Elastic Rubber Plate Fixed Castor 125mm 200kg Load

Product code: BZPHF125SRERGBJ

Pressed steel fixed castor with a top plate fixing with a grey ergonomic grey high elastic natural 55 shore A round profile rubber tyred wheel with a aluminium centre with a ball bearing. Wheel diameter 125mm, tread width 40mm, overall height 158mm, top plate 135mm x 110mm, hole centres 105mm x 80mm. Load capacity 200kg. REACH compliant also PAH-Free rubber to confirm to EU-directive 2005/69/EC, also available with flat tread details on request



Diameter (mm)	125
Castor Type	Fixed
Fixing Option	Plate
Height (mm)	155
Wheel Material	Rubber on Aluminium
Colour / Shore Hardness	Grey Ergonomic Rubber on Aluminium Rim / 55 Shore A
Temperature Resistance	-30 °C TO +80 °C
Bearing Type	Ball
Load Capacity (kg)	200
Tread (mm)	40
Plate Size (mm)	135 x 115
Hole Centres (mm)	105 x 80/75
Top Plate Thickness (mm)	4
Fork Thickness (mm)	4
To Suit Fixing Bolt (mm)	10

BIL GROUP LTD

Porte Marsh Road, Calne, Wiltshire, SN11 9BW

Registered in England No: 2603821

VAT Reg: GB572705729

