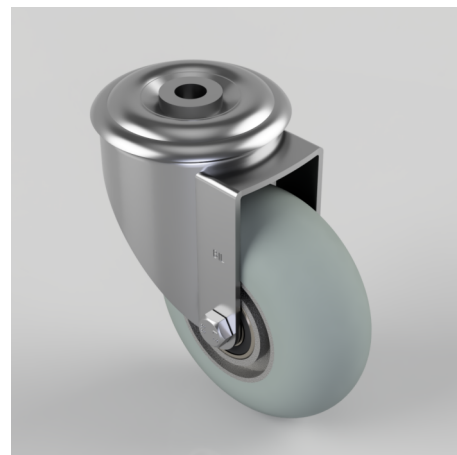


Grey Soft Elastic Rubber Bolt Hole Swivel Castor 100mm 150kg Load

Product code: BZMM100SRERGBJBH12

Pressed steel swivel castor with 12mm bolt hole fitted with a grey ergonomic round profile high elastic natural 55 shore A rubber tyred aluminium centred wheel with ball bearings. Wheel diameter 100mm, tread width 40mm, overall height 128mm, Load capacity 150kg. REACH compliant also PAH-Free rubber to confirm to EU-directive 2005/69/EC



Diameter (mm)	100
Castor Type	Swivel
Fixing Option	Bolt Hole
Height (mm)	128
Wheel Material	Rubber on Aluminium
Colour / Shore Hardness	Grey Ergonomic Rubber on Aluminium Rim / 55 Shore A
Temperature Resistance	-30 °C TO +80 °C
Bearing Type	Ball
Load Capacity (kg)	150
Tread (mm)	40
Swivel Radius (mm)	88
Head Dia (mm)	76
Fork Thickness (mm)	2.5
To Suit Fixing Bolt (mm)	12

BIL GROUP LTD

Porte Marsh Road, Calne, Wiltshire, SN11 9BW

Registered in England No: 2603821

VAT Reg: GB572705729

