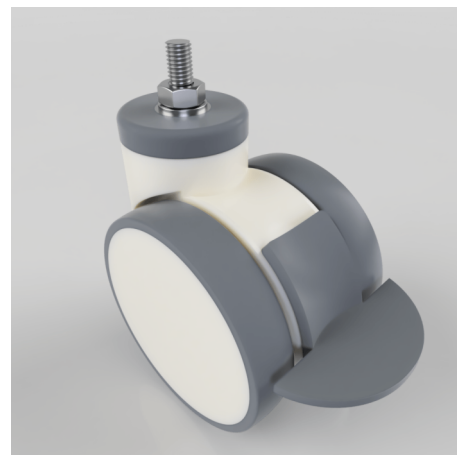


## Grey Rubber Stem Swivel Castor Brake 100mm 90kg load

**Product code: NTW100TPRBJSWBST**

Twin wheel nylon body swivel castor with bolt hole fixing. Twin grey rubber tyred wheels with ball bearings and fitted with a M10mm x 15mm fixed stem and total lock brake. Wheel diameter 2 x 100mm, tread width 2 x 20mm, Total castor width 82mm, overall height 124mm. bolt hole 12.5mm, Load capacity 90kg.



Height (mm)	124
Tread (mm)	20 x 2
To Suit Fixing Bolt (mm)	M12 X 26
Bearing Type	Ball
Diameter (mm)	100
Wheel Material	Grey Rubber on Polypropylene
Fixing Option	Bolt Hole
Castor Type	Swivel with Total Lock Brake
Load Capacity (kg)	90
Shore Hardness	85 Shore A
Swivel Radius (mm)	115

## BIL GROUP LTD

Porte Marsh Road, Calne, Wiltshire, SN11 9BW

Registered in England No: 2603821

VAT Reg: GB572705729

