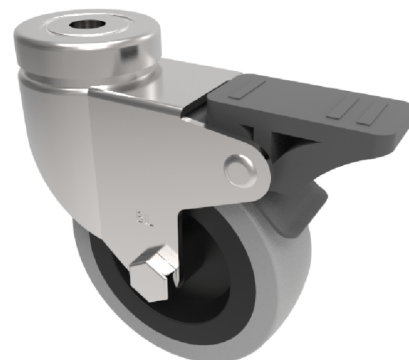


Grey Rubber Polypropylene Bolt Hole Swivel Castor Brake 50mm 40kg Load

Product code: BZA50GRBH10SWB

Pressed steel swivel castor with a 10mm bolt hole fixing fitted with a grey rubber tyred wheel with a plain bore with a total lock brake. Wheel diameter 50mm, overall height 70mm. Load capacity 40kg.



Diameter (mm)	50
Fixing Option	Bolt Hole
Castor Type	Swivel with Total Lock Brake
Head Dia (mm)	41
Height (mm)	72
Bearing Type	Plain
Swivel Radius (mm)	83
Wheel Material	Rubber on Polypropylene
Colour / Shore Hardness	Grey Rubber on Polypropylene Rim / 87 Shore A
Fork Thickness (mm)	2
Temperature Resistance	-15 °C TO +45 °C
To Suit Fixing Bolt (mm)	10
Tread (mm)	18
Load Capacity (kg)	40

BIL GROUP LTD

Porte Marsh Road, Calne, Wiltshire, SN11 9BW

Registered in England No: 2603821

VAT Reg: GB572705729

