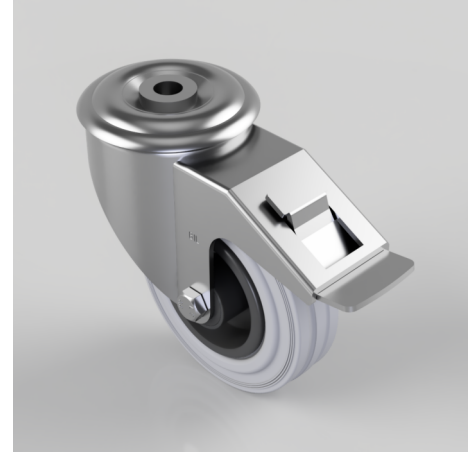


Grey Rubber Polypropylene Bolt Hole Swivel Castor Brake 100mm 70kg Load

Product code: BZMM100GRBBH12SWB

Pressed steel swivel castor with 12mm bolt hole fitted with a grey rubber tyre on black polypropylene centre with roller bearing and total lock brake . Wheel diameter 100mm, tread width 30mm, overall height 128mm, Load capacity 70kg.



Diameter (mm)	100
Castor Type	Swivel
Fixing Option	Bolt Hole
Height (mm)	128
Wheel Material	Rubber on Polypropylene
Colour / Shore Hardness	Grey Rubber on Polypropylene Rim / 85 Shore A
Temperature Resistance	-20 °C TO +60 °C
Bearing Type	Roller
Load Capacity (kg)	70
Tread (mm)	30
Swivel Radius (mm)	119
Head Dia (mm)	76
Fork Thickness (mm)	2.5
To Suit Fixing Bolt (mm)	12