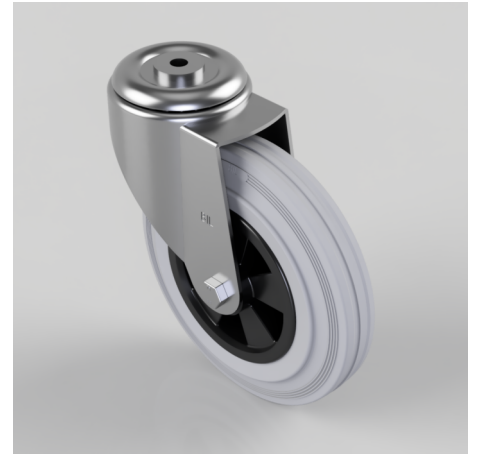


## Grey Rubber Polypropylene Bolt Hole Swivel Castor 200mm 205kg Load

**Product code: BZMM200GRBBH12**

Pressed steel swivel castor with a 12mm bolt hole fitted with a grey rubber tyre black polypropylene centred wheel with a roller bearing. Wheel diameter 200mm, tread width 46mm, overall height 235mm, Load capacity 205kg.



Diameter (mm)	200
Castor Type	Swivel
Fixing Option	Bolt Hole
Height (mm)	235
Wheel Material	Rubber on Polypropylene
Colour / Shore Hardness	Grey Rubber on Polypropylene Rim / 85 Shore A
Temperature Resistance	-20 °C TO +60 °C
Bearing Type	Roller
Load Capacity (kg)	205
Tread (mm)	46
Swivel Radius (mm)	168
Head Dia (mm)	90
Fork Thickness (mm)	3
To Suit Fixing Bolt (mm)	12

### BIL GROUP LTD

Porte Marsh Road, Calne, Wiltshire, SN11 9BW

Registered in England No: 2603821

VAT Reg: GB572705729

