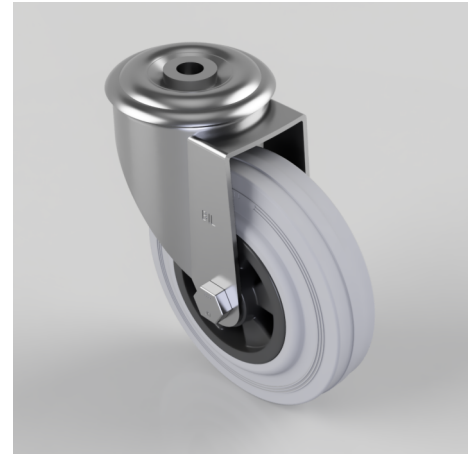


Grey Rubber Polypropylene Bolt Hole Swivel Castor 125mm 90kg Load

Product code: BZMM125GRBH12

Pressed steel swivel castor with a 12mm bolt hole fixing fitted with a grey rubber tyre on black polypropylene centred wheel with a plain bore. Wheel diameter 125mm, tread width 37.5mm, overall height 155mm. Load capacity 90kg..



Diameter (mm)	125
Castor Type	Swivel
Fixing Option	Bolt Hole
Height (mm)	155
Wheel Material	Rubber on Polypropylene
Colour / Shore Hardness	Grey Rubber on Polypropylene Rim / 85 Shore A
Temperature Resistance	-20 °C TO +60 °C
Bearing Type	Plain
Load Capacity (kg)	90
Tread (mm)	37.5
Swivel Radius (mm)	104
Head Dia (mm)	76
Fork Thickness (mm)	2.5
To Suit Fixing Bolt (mm)	12

BIL GROUP LTD

Porte Marsh Road, Calne, Wiltshire, SN11 9BW

Registered in England No: 2603821

VAT Reg: GB572705729

