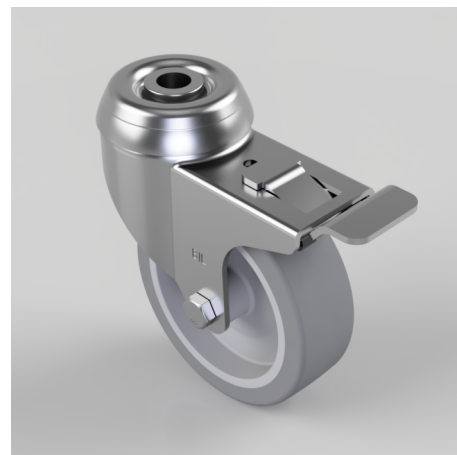


Grey Rubber Bolt Hole Swivel Castor Brake 75mm 60kg Load

Product code: BZD75VGRBH10SWB

Pressed steel swivel castor with a 10mm bolt hole fitted with a grey thermoplastic rubber tyre on a grey polypropylene centred wheel with a plain bore and total lock brake. Wheel diameter 75mm, tread width 24mm, overall height 99mm. Load capacity 60kg REACH COMPLIANT



Diameter (mm)	75
Fixing Option	Bolt Hole
Castor Type	Swivel with Total Lock Brake
Head Dia (mm)	48
Height (mm)	99
Bearing Type	Plain
Swivel Radius (mm)	84
Wheel Material	Rubber on Polypropylene
Colour / Shore Hardness	Grey Rubber on Polypropylene Rim / 87 Shore A
Fork Thickness (mm)	2
Temperature Resistance	-15 °C TO +45 °C
To Suit Fixing Bolt (mm)	10
Tread (mm)	24
Load Capacity (kg)	60

BIL GROUP LTD

Porte Marsh Road, Calne, Wiltshire, SN11 9BW

Registered in England No: 2603821

VAT Reg: GB572705729

