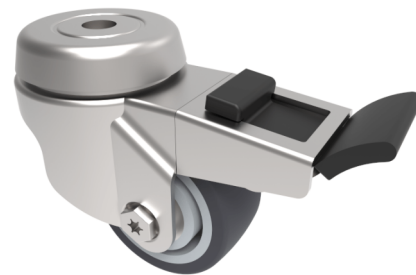


Grey Rubber Bolt Hole Swivel Castor Brake 50mm 50kg Load

Product code: SSRA50VGRBJBH10SWB

Grade 304 Pressed stainless steel swivel castor with a 10mm bolt hole fitted with a grey thermoplastic rubber tyre on polypropylene centred wheel with stainless steel ball bearings and a total lock brake. Wheel diameter 50mm, tread width 24mm, overall height 74mm. Load capacity 50kg



| | |
|--------------------------|---|
| Diameter (mm) | 50 |
| Fixing Option | Bolt Hole |
| Castor Type | Swivel with Total Lock Brake |
| Height (mm) | 74 |
| Wheel Material | Rubber on Polypropylene |
| Colour / Shore Hardness | Grey Rubber on Polypropylene Rim / 87 Shore A |
| Bearing Type | Ball |
| Tread (mm) | 24 |
| Fork Thickness (mm) | 1.8 |
| To Suit Fixing Bolt (mm) | 10 |
| Load Capacity (kg) | 50 |
| Temperature Resistance | -15 °C TO +80 °C |
| Head Dia (mm) | 50 |
| Swivel Radius (mm) | 88 |

BIL GROUP LTD

Porte Marsh Road, Calne, Wiltshire, SN11 9BW

Registered in England No: 2603821

VAT Reg: GB572705729

