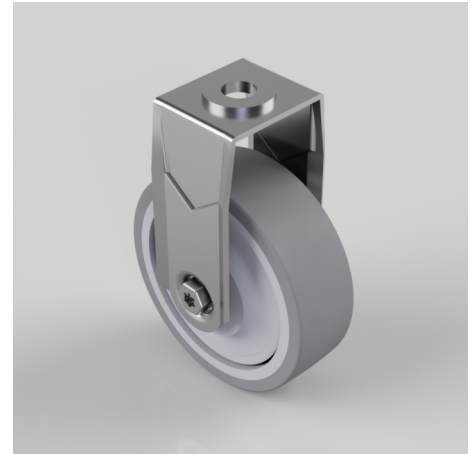


Grey Rubber Bolt Hole Swivel Castor 75mm 60kg Load

Product code: BZRAF75VGRBJBH10

Pressed steel fixed castor with a 10mm bolt hole fitted with a grey thermoplastic rubber tyre on polypropylene centred wheel with ball bearings. Wheel diameter 75mm, tread width 24mm, overall height 101mm with a Load capacity 50kg.

****MANUFACTURED TO ORDER****



Diameter (mm)	75
Fixing Option	Bolt Hole
Castor Type	Fixed
Head Dia (mm)	21
Height (mm)	101
Bearing Type	Ball
Wheel Material	Rubber on Polypropylene
Colour / Shore Hardness	Grey Rubber on Polypropylene Rim / 87 Shore A
Fork Thickness (mm)	1.8
Temperature Resistance	-15 °C TO +80 °C
To Suit Fixing Bolt (mm)	10
Tread (mm)	24
Load Capacity (kg)	60

BIL GROUP LTD

Porte Marsh Road, Calne, Wiltshire, SN11 9BW

Registered in England No: 2603821

VAT Reg: GB572705729

