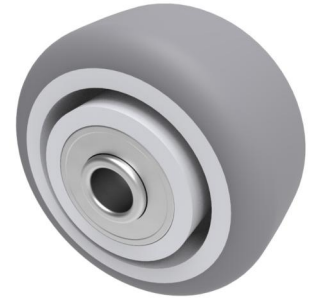


## Grey Rubber 50mm Ball Bearing Wheel 50kg Load

**Product code: BZL50WVGRBJM8/28**



Grey thermoplastic rubber on polypropylene wheel with ball bearing bore. Wheel diameter 50mm, tread width 24mm, Hub width 28mm, Bore size 8mm. Load capacity 50kg.

Wheel Material	Rubber on Polypropylene
Diameter (mm)	50
Load Capacity (kg)	50
Bearing Type	Ball
Bore Size (mm)	8
Tread (mm)	24
Hub Width (mm)	28
Colour / Shore Hardness	Grey Rubber on Polypropylene Rim / 87 Shore A
Temperature Resistance	-10 °C TO +50 °C

### BIL GROUP LTD

Porte Marsh Road, Calne, Wiltshire, SN11 9BW

Registered in England No: 2603821

VAT Reg: GB572705729

