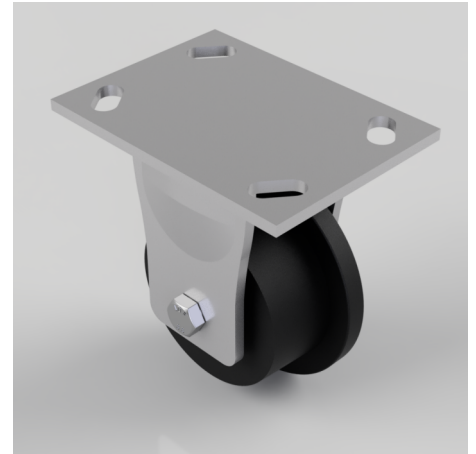


Flanged Cast Iron Fixed Castor Plate 100mm 800kg

Product code: BZKF100CSFBJ

Fabricated fixed castor with a top plate fixing fitted with a single flanged cast iron wheel with ball journal bearings. Wheel diameter 100mm (overall 125mm) tread width 38mm (overall flange 50mm) overall height 150mm, top plate 150mm x 110mm, hole centres 105mm x 80mm or 121mm x 59mm. Load capacity 800kg.



Fixing Option	Plate
Castor Type	Fixed
Load Capacity (kg)	800
Wheel Material	Cast Iron
Diameter (mm)	100
Flanged Diameter (mm)	125
Bearing Type	Ball
Colour / Shore Hardness	Black Painted Cast Iron
Hole Centres (mm)	105/121 x 80/59
To Suit Fixing Bolt (mm)	12
Total Width (mm)	50
Top Plate Thickness (mm)	6
Fork Thickness (mm)	6
Tread (mm)	38
Temperature Resistance	-30 °C TO +80 °C

BIL GROUP LTD

Porte Marsh Road, Calne, Wiltshire, SN11 9BW

Registered in England No: 2603821

VAT Reg: GB572705729

