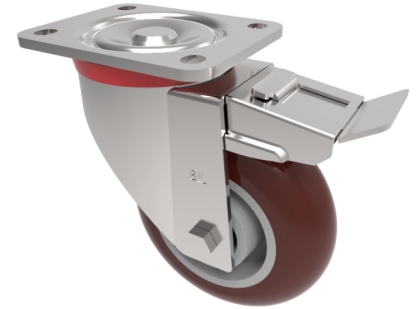


Ergonomic Polyurethane Plate Swivel Castor Brake 150mm 575kg Load

Product code: BZP150RPTABJSWB



Pressed steel swivel castor with a top plate fixing fitted with a Ergonomic round polyurethane tyred aluminium centred wheel with ball bearings and a total lock brake. Wheel diameter 150mm, tread width 50mm, overall height 194mm, plate size 135mm x 110mm, hole centres 105mm x 80mm. Load capacity 575kg.

Diameter (mm)	150
Castor Type	Swivel with Total Lock Brake
Fixing Option	Plate
Height (mm)	194
Wheel Material	Polyurethane on Aluminium
Colour / Shore Hardness	Brown Ergonomic Polyurethane on Aluminium Rim / 95 Shore A
Temperature Resistance	-20 °C TO +80 °C
Bearing Type	Ball
Load Capacity (kg)	575
Tread (mm)	50
Swivel Radius (mm)	150
Plate Size (mm)	135 x 110
Hole Centres (mm)	105 x 80
Top Plate Thickness (mm)	6
Fork Thickness (mm)	4
To Suit Fixing Bolt (mm)	12