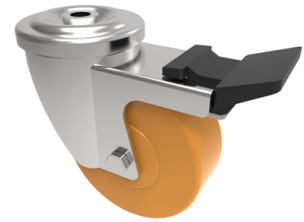


Epoxy Resin Bolthole Swivel Castor Brake 100mm 160kg Load

Product code: SSMH100ANBJBH12SWB/250



Grade 304 Stainless steel swivel castor with a 12mm bolt hole fitted with a high temperature orange epoxy resin wheel with BZP ball bearings and high temperature grease with a total lock brake. Wheel diameter 100mm, tread width 38mm, overall height 128mm, Load capacity 150kg. maximum temperature 250°C

Diameter (mm)	100
Fixing Option	Bolt Hole
Castor Type	Swivel with Total Lock Brake
Head Dia (mm)	78
To Suit Fixing Bolt (mm)	12
Height (mm)	128
Bearing Type	Ball
Swivel Radius (mm)	125
Wheel Material	Epoxy Resin
Colour / Shore Hardness	Orange High Temperature Epoxy Resin
Temperature Resistance	-20 °C to +250 °C
Load Capacity (kg)	160
Tread (mm)	38
Fork Thickness (mm)	2.5

BIL GROUP LTD

Porte Marsh Road, Calne, Wiltshire, SN11 9BW

Registered in England No: 2603821

VAT Reg: GB572705729

