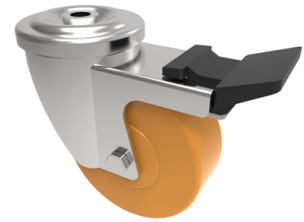


## Epoxy Resin Bolthole Swivel Castor Brake 100mm 160kg Load

**Product code: BZMH100ANBJBH12SWB/250**



Pressed steel swivel castor with a bolt hole fitted with a high temperature heavy duty orange epoxy resin wheel with enclosed ball bearing and total lock. Wheel diameter 100mm, tread width 38mm, overall height 128mm, top plate 100mm x 85mm, bolt hole 12mm. Load capacity 150kg. Temp range 250c

Diameter (mm)	100
Fixing Option	Bolt Hole
Castor Type	Swivel with Total Lock Brake
Head Dia (mm)	78
To Suit Fixing Bolt (mm)	12
Height (mm)	128
Bearing Type	Ball
Swivel Radius (mm)	125
Wheel Material	Epoxy Resin
Colour / Shore Hardness	Orange High Temperature Epoxy Resin
Temperature Resistance	-20 °C to +250 °C
Load Capacity (kg)	160
Tread (mm)	38
Fork Thickness (mm)	2.5

## BIL GROUP LTD

Porte Marsh Road, Calne, Wiltshire, SN11 9BW

Registered in England No: 2603821

VAT Reg: GB572705729

