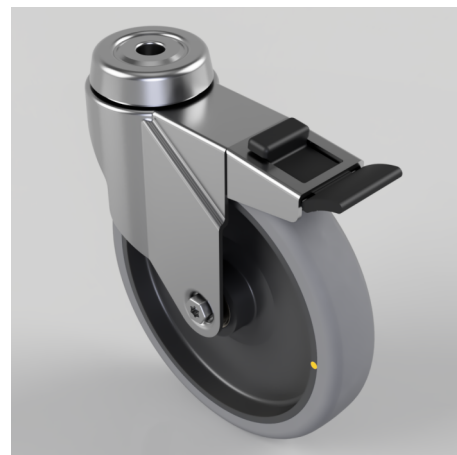


Electrically Conductive Rubber Swivel Brake Bolt Hole 125mm 80kg Load

Product code: BZRA125GRECBJBH10SWB

Pressed steel swivel castor with a single bolt hole fitted with a grey electrically conductive rubber tyre on polypropylene centred wheel with ball bearing and total lock brake. Wheel diameter 125mm, tread width 24mm, overall height 149mm, 10mm single bolt hole, Load capacity 80kg. Conductive offers a resistance $R < 10^{10} \Omega$.



Diameter (mm)	125
Fixing Option	Bolt Hole
Castor Type	Swivel with Total Lock Brake
Head Dia (mm)	46
Height (mm)	149
Bearing Type	Ball
Swivel Radius (mm)	106
Wheel Material	Electrically Conductive Rubber
Colour / Shore Hardness	Grey Electrically Conductive Rubber on Nylon Rim / 85 Shore A
Fork Thickness (mm)	1.8
Temperature Resistance	-15 °C TO +80 °C
To Suit Fixing Bolt (mm)	10
Tread (mm)	24
Load Capacity (kg)	80

BIL GROUP LTD

Porte Marsh Road, Calne, Wiltshire, SN11 9BW

Registered in England No: 2603821

VAT Reg: GB572705729

