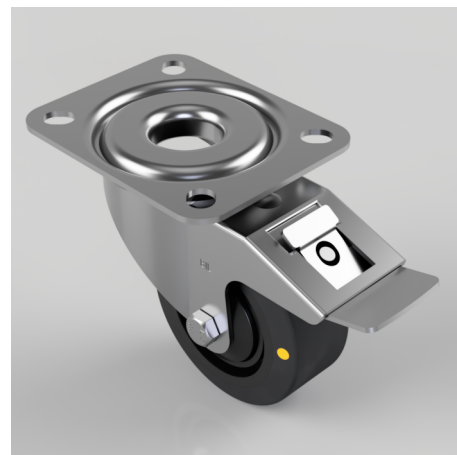


## Electrically Conductive Rubber Plate Swivel Castor Brake 80mm 150kg

**Product code: BZMM80RNBJECSWB**

Pressed steel swivel castor with a top plate fixing fitted with a 65 shore A black elastic electrically conductive rubber wheel on a black nylon centre with a ball bearing and a total lock brake. Wheel diameter 80mm, tread width 35mm, overall height 105mm, top plate 105mm x 85mm, hole centres 80mm x 60mm Load capacity 100kg. Conductivity range is  $10^3$  ohm to  $10^4$  ohm



Diameter (mm)	80
Castor Type	Swivel with Total Lock Brake
Fixing Option	Plate
Height (mm)	105
Wheel Material	Black Rubber on Polypropylene
Colour / Shore Hardness	Black Elastic Rubber on Cast Iron Rim / 65 Shore A
Temperature Resistance	-20 °C TO +60 °C
Bearing Type	Ball
Load Capacity (kg)	150
Tread (mm)	35
Swivel Radius (mm)	111
Plate Size (mm)	105 X 85
Hole Centres (mm)	80 X 60
Top Plate Thickness (mm)	2.5
Fork Thickness (mm)	2
To Suit Fixing Bolt (mm)	8

## BIL GROUP LTD

Porte Marsh Road, Calne, Wiltshire, SN11 9BW

Registered in England No: 2603821

VAT Reg: GB572705729

