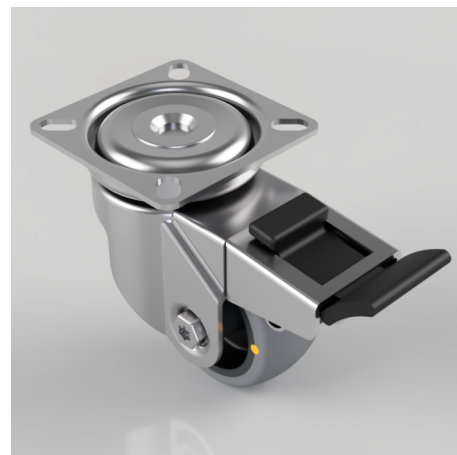


## Electrically Conductive Rubber Plate Swivel Castor Brake 50mm 50kg Load

**Product code: SSRA50GRECSWB**

Grade 304 Pressed stainless steel swivel castor with a top plate fitted with a grey electrically conductive rubber tyre on polypropylene centred wheel with a plain bore and total lock brake. Wheel diameter 50mm, tread width 24mm, overall height 74mm. plate size 60mm x 60mm, hole centres 49mm x 49mm or 43mm x 43mm Load capacity 50kg. Conductive offers a resistance  $R < 10 \Omega$



Diameter (mm)	50
Fixing Option	Plate
Castor Type	Swivel with Total Lock Brake
Height (mm)	74
Wheel Material	Rubber on Polypropylene
Colour / Shore Hardness	Grey Rubber on Polypropylene Rim / 85 Shore A
Bearing Type	Plain
Tread (mm)	24
Fork Thickness (mm)	1.8
To Suit Fixing Bolt (mm)	6
Load Capacity (kg)	50
Temperature Resistance	-15 °C TO +80 °C
Plate Size (mm)	60 x 60
Hole Centres (mm)	49/43 x 49/43
Top Plate Thickness (mm)	1.8
Swivel Radius (mm)	86

## BIL GROUP LTD

Porte Marsh Road, Calne, Wiltshire, SN11 9BW

Registered in England No: 2603821

VAT Reg: GB572705729

