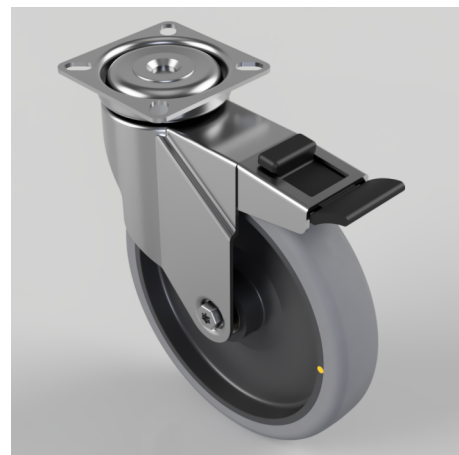


Electrically Conductive Rubber Plate Swivel Castor Brake 125mm 100kg

Product code: BZM125GRECSWB

Pressed steel swivel castor with a top plate fitted with a grey electrically conductive rubber on grey polypropylene centred wheel and total lock brake, Wheel diameter 125mm, 32mm tread width, 156mm overall height, 90mm x 70mm top plate, 75mm x 55mm or 64mm x 44mm bolt holes, with a load capacity of 100kg. Conductive offers a resistance $R < 10 \Omega$



Diameter (mm)	125
Fixing Option	Plate
Castor Type	Swivel with Total Lock Brake
Plate Size (mm)	90 x 70
Hole Centres (mm)	64/75 x 44/56
Height (mm)	156
Bearing Type	Plain
Swivel Radius (mm)	107
Wheel Material	Electrically Conductive Rubber
Colour / Shore Hardness	Grey Electrically Conductive Rubber on Nylon Rim / 85 Shore A
Top Plate Thickness (mm)	2
Fork Thickness (mm)	2
Temperature Resistance	-15 °C TO +80 °C
To Suit Fixing Bolt (mm)	8
Tread (mm)	32
Load Capacity (kg)	100

BIL GROUP LTD

Porte Marsh Road, Calne, Wiltshire, SN11 9BW

Registered in England No: 2603821

VAT Reg: GB572705729

