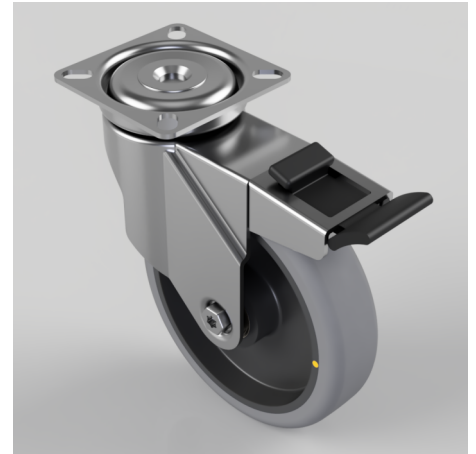


Electrically Conductive Rubber Plate Swivel Castor Brake 100mm 90kg Load

Product code: BZM100GRECSWB

Pressed steel swivel castor with a top plate fixing fitted with a grey electrically conductive tyre on a black polypropylene centred wheel with plain bore with total lock brake. Wheel diameter 100mm, tread width 32mm, overall height 132mm, top plate 90mm x 70mm, hole centres 75mm x 56mm or 64mm x 44mm. Load capacity 90kg. Conductive offers a resistance $R < 10 \Omega$



Diameter (mm)	100
Fixing Option	Plate
Castor Type	Swivel with Total Lock Brake
Plate Size (mm)	90 x 70
Hole Centres (mm)	64/75 x 44/56
Height (mm)	132
Bearing Type	Plain
Swivel Radius (mm)	107
Wheel Material	Electrically Conductive Rubber
Colour / Shore Hardness	Grey Electrically Conductive Rubber on Nylon Rim / 85 Shore A
Top Plate Thickness (mm)	2
Fork Thickness (mm)	2
Temperature Resistance	-15 °C TO +80 °C
To Suit Fixing Bolt (mm)	8
Tread (mm)	32
Load Capacity (kg)	90

BIL GROUP LTD

Porte Marsh Road, Calne, Wiltshire, SN11 9BW

Registered in England No: 2603821

VAT Reg: GB572705729

