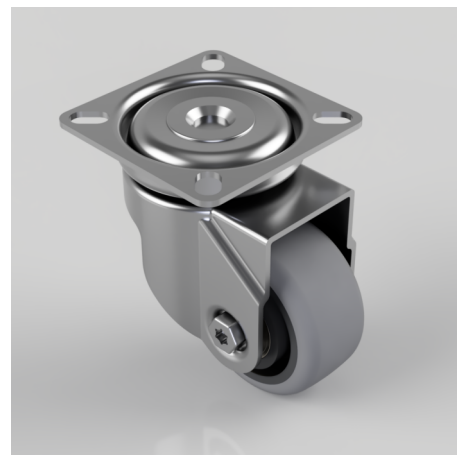


## Electrically Conductive Rubber Plate Swivel Castor 50mm 50kg Load

**Product code: BZRA50GRECBJ**

Pressed steel swivel castor with a flat plate fitted with a grey electrically conductive rubber tyre on polypropylene centred wheel with ball bearings. Wheel diameter 50mm, tread width 24mm, overall height 74mm plate size 60mm x 60mm, hole centres 49mm x 49mm or 43mm x 43mm with a Load capacity 50kg. Conductive offers a resistance  $R < 10 \Omega$



|                          |   |
|--------------------------|---|
| Diameter (mm)            | 50  |
| Fixing Option            | Plate   |
| Castor Type              | Swivel  |
| Plate Size (mm)          | 60 x 60   |
| Hole Centres (mm)        | 49/43 x 49/43   |
| Height (mm)              | 74  |
| Bearing Type             | Ball  |
| Swivel Radius (mm)       | 50  |
| Wheel Material           | Electrically Conductive Rubber                                |
| Colour / Shore Hardness  | Grey Electrically Conductive Rubber on Nylon Rim / 85 Shore A |
| Top Plate Thickness (mm) | 1.8   |
| Fork Thickness (mm)      | 1.8   |
| Temperature Resistance   | -15 °C TO +80 °C  |
| To Suit Fixing Bolt (mm) | 6   |
| Tread (mm)               | 24  |
| Load Capacity (kg)       | 50  |

## BIL GROUP LTD

Porte Marsh Road, Calne, Wiltshire, SN11 9BW

Registered in England No: 2603821

VAT Reg: GB572705729

