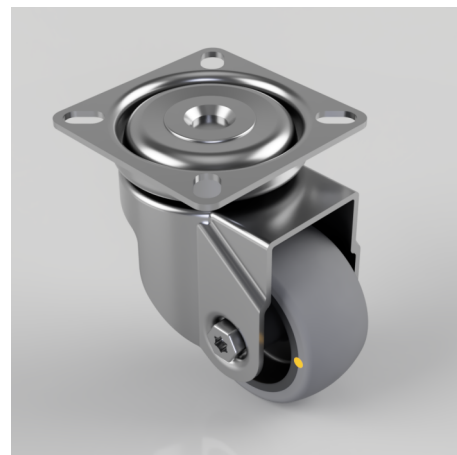


Electrically Conductive Rubber Plate Swivel Castor 50mm 50kg Load

Product code: BZRA50GREC

Pressed steel swivel castor with a flat plate fitted with a grey electrically conductive rubber tyre on polypropylene centred wheel with a plain bore. Wheel diameter 50mm, tread width 24mm, overall height 74mm plate size 60mm x 60mm, hole centres 49mm x 49mm or 43mm x 43mm with a Load capacity 50kg. Conductive offers a resistance $R < 10 \Omega$



Diameter (mm)	50
Fixing Option	Plate
Castor Type	Swivel
Plate Size (mm)	60 x 60
Hole Centres (mm)	49/43 x 49/43
Height (mm)	74
Bearing Type	Plain
Swivel Radius (mm)	50
Wheel Material	Electrically Conductive Rubber
Colour / Shore Hardness	Grey Electrically Conductive Rubber on Nylon Rim / 85 Shore A
Top Plate Thickness (mm)	1.8
Fork Thickness (mm)	1.8
Temperature Resistance	-15 °C TO +80 °C
To Suit Fixing Bolt (mm)	6
Tread (mm)	24
Load Capacity (kg)	50

BIL GROUP LTD

Porte Marsh Road, Calne, Wiltshire, SN11 9BW

Registered in England No: 2603821

VAT Reg: GB572705729

